

"DONNA" SNAP FITTING

- high quality furniture fittings



"Donna" snap fitting series is an expansion of our "Diva" range. Perfect for upholstery furniture where strong and hidden solutions are desired. Not suitable for ceiling installations.

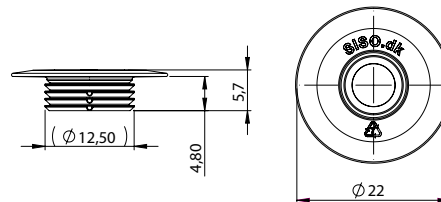
Features:

- The collar on "Donna" ensures fast and precise assembly/installation.
- "Donna" can be used on through holes as well as interrupted holes.
- Can be used in connection with all types of materials. Both hard and soft (felt, veneer and composite boards, etc.)
- "Donna" works both without and with bottom part.
- Bottom part ensures a strong "button joint". Also, when mounting on thin and more porous items.



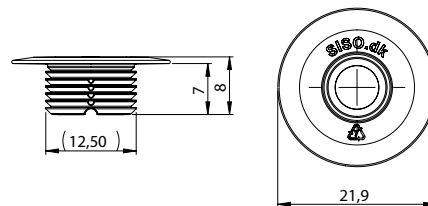
Top Part "S"

Material: Grey PC
Size: Ø 22 x 5,7 mm
Item No.: # 11.06.024



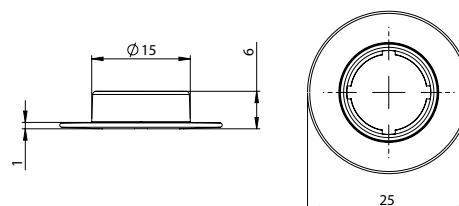
Top Part "L"

Material: Grey PC
Size: Ø 22 x 8 mm
Item No.: # 11.06.025

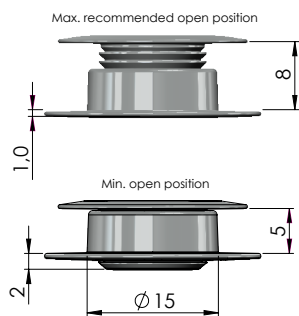


Bottom Part

Material: Grey PC
Size: Ø 25 x 6 mm
Item No.: # 11.06.026



"DONNA" SNAP FITTING

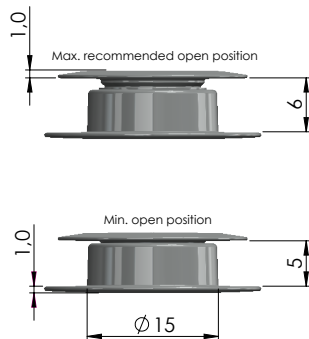
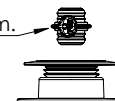


Setup items:
11.06.025 "Donna" Top Part "L", ø22x8mm
11.06.026 "Donna" Bottom Part, ø25x6mm

Work range: 5 - 8mm.
(Tested joint strength at max. open position: 24 kg)

Drill: Ø15 mm.

Diva male part to be added 0 - 3 mm.

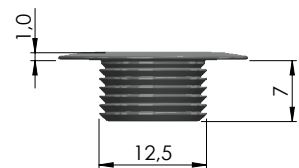
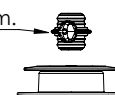


Setup items:
11.06.024 "Donna" Top Part "S", ø22x5,7mm
11.06.026 "Donna" Bottom Part, ø25x6mm

Work range: 5 - 6mm.
(Tested joint strength at max. open position: 24 kg)

Drill: Ø15 mm.

Diva male part to be added 0 - 3 mm.

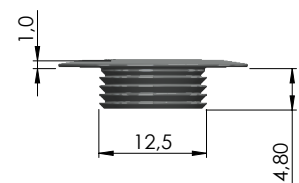
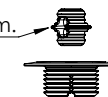


Setup items:
11.06.025 "Donna" Top Part "L", ø22x8mm

Work range: >7 mm.
(Extract tension tested: ≈32 kg)

Diva male part to be added 0 - 3 mm.

Drill: Ø12 mm.

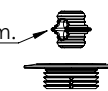


Setup items:
11.06.024 "Donna" Top Part "S", ø22x5,7mm

Work range: >4,8 mm.
(Extract tension tested: ≈25 kg)

Diva male part to be added 0 - 3 mm.

Drill: Ø12 mm.



SISO A/S

Mileparken 11 Phone: (+45) 45 830 900
DK - 2740 Skovlunde (Copenhagen) E-mail: siso@siso.dk
Denmark Web: www.siso.dk